

• • , • • ”
• • , • • •

In the article the structure of the system and processes of teleologism is investigational in a management development of enterprise, including the cycle of reflection management realization of the having a special purpose programs.

© . . . , . . . , 2010

[1].

– "... " " " " " [2, 112-113].

)

[3].

–

– [4].

)

– [5],

;

[6].

()

()

[7].

"..."

" "

(" " [7]), " "

2.

()

¹ <http://ru.wikipedia.org/wiki/journal.com/voprosiupravleniya/63.html>.

()

,

,

()

,

,

()

,

,

.

,

,

,

,

()

,

,

,

.

,

[8]

-

,

,

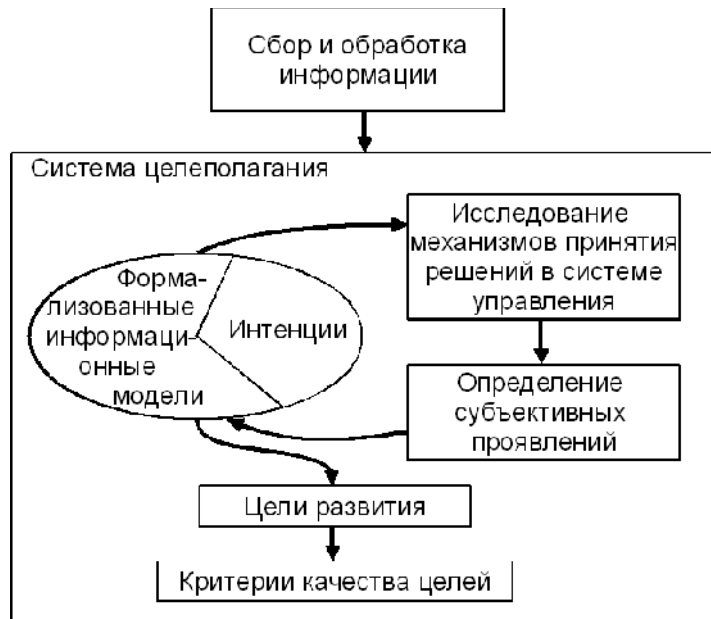
,

[8, 9].

,

,

(.1).



. 1.

. 2.

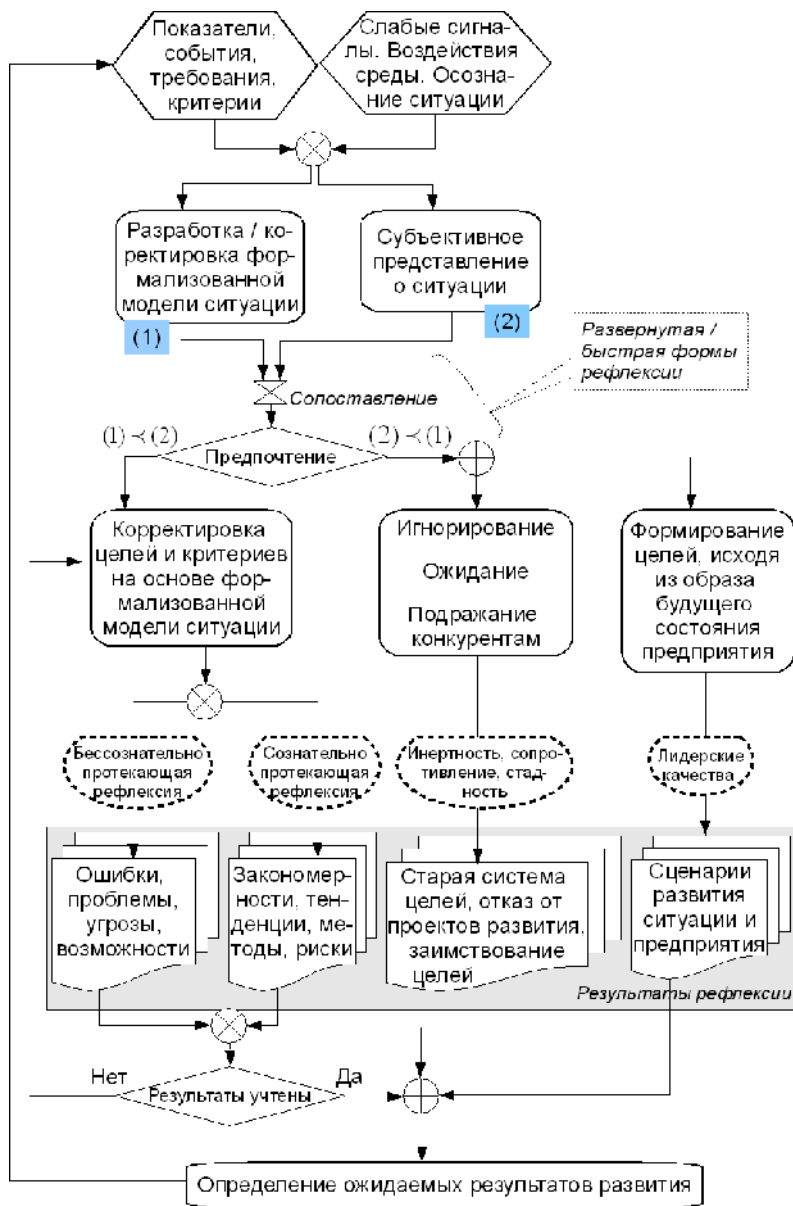
[10] –

()

()

[11].

()



. 2.

[12, 13].

$$R_g = r_g^1 + (1 - r_g^1) \cdot (1 - r_g^2) \cdot M(r_g, q_g),$$

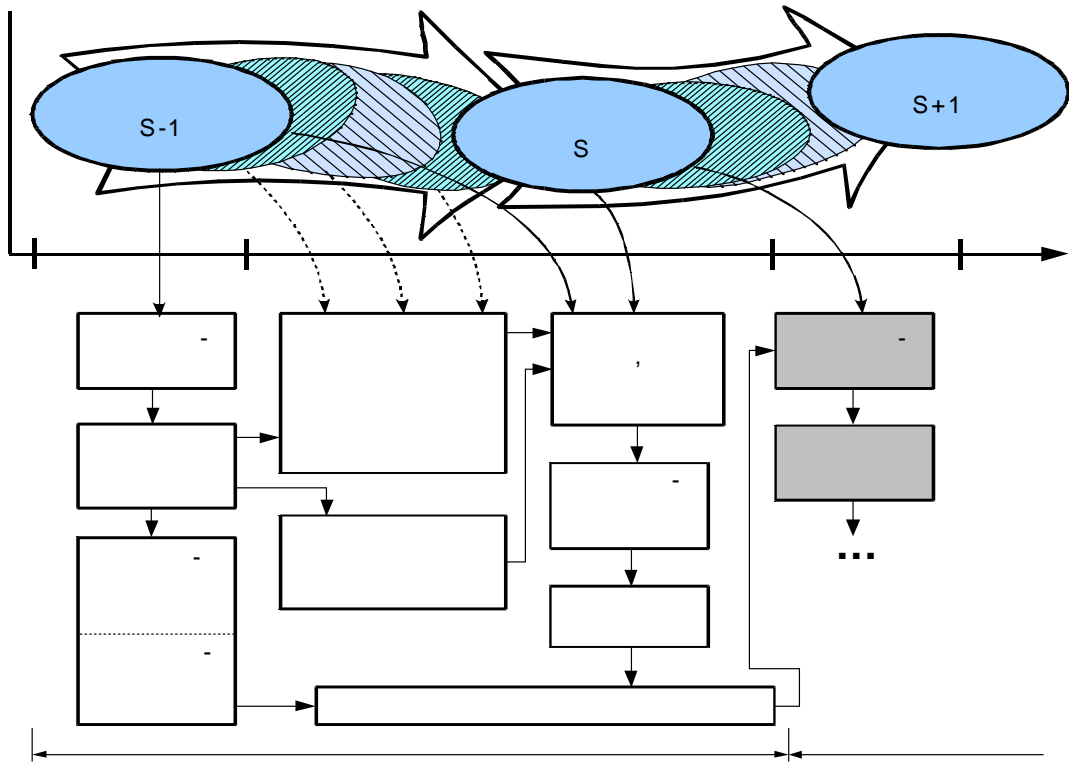
$$r_g^1 -$$

$$r_g^2 -$$

$$M(r_g, q_g) -$$

$$q_g$$

[14]. $R_g -$



. 3.

[3].

$$C^{ref} = C^{rat} + S + D,$$

C^{rat} –

S –

D –

()

[3].

1. / , 2008. – 504 .
2. : 2- / / – , 1989. – 304 .
3. : / – : 2005. – 480 .
4. : / – : , 2001. – 271 .
5. / , – , 1989. – 360 .
6. / , , – , 2007. – 232 .
7. : 09.00.01. – : , 2008. – 44 .
8. // – 2003. – 2. – 3. – 16-34.
9. / // – 2006. – 6. – 2. – 5-20.
10. Lefebvre V.A. The Fundamental Structures of Human Reflexion // Journal of Social and Biological Structures. – 1987. – 10. – P. 129-175.
11. Byrd D.M., Cothorn C.R. Introduction to risk analysis. A systematic approach to science-based decision making. – USA, Lanham: Government Institutes, The Scarecrow Press, 2000. – 443 p.
12. // – 2005. – 4. – 53-64.
13. (.) / , // – 2006. – 3. – 4. – 3-26.
14. " " / // – 2004. – 2. – 4. – 42-47.