

70,8%

Maritime Organization,

International

90%

2008 .

2010 .

2008 .

2,7

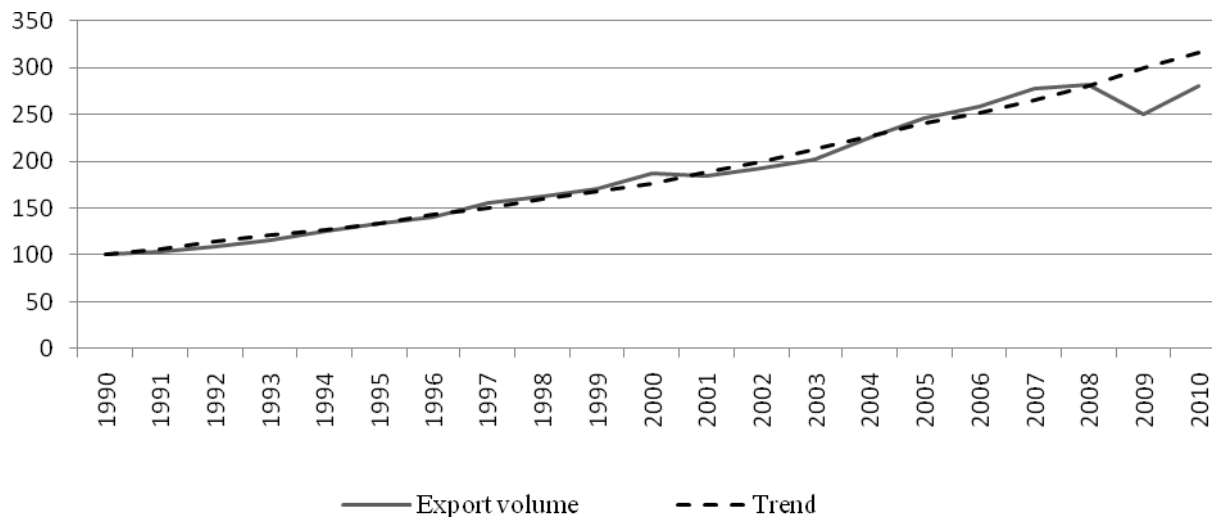
2009 ..

. 1 [2].

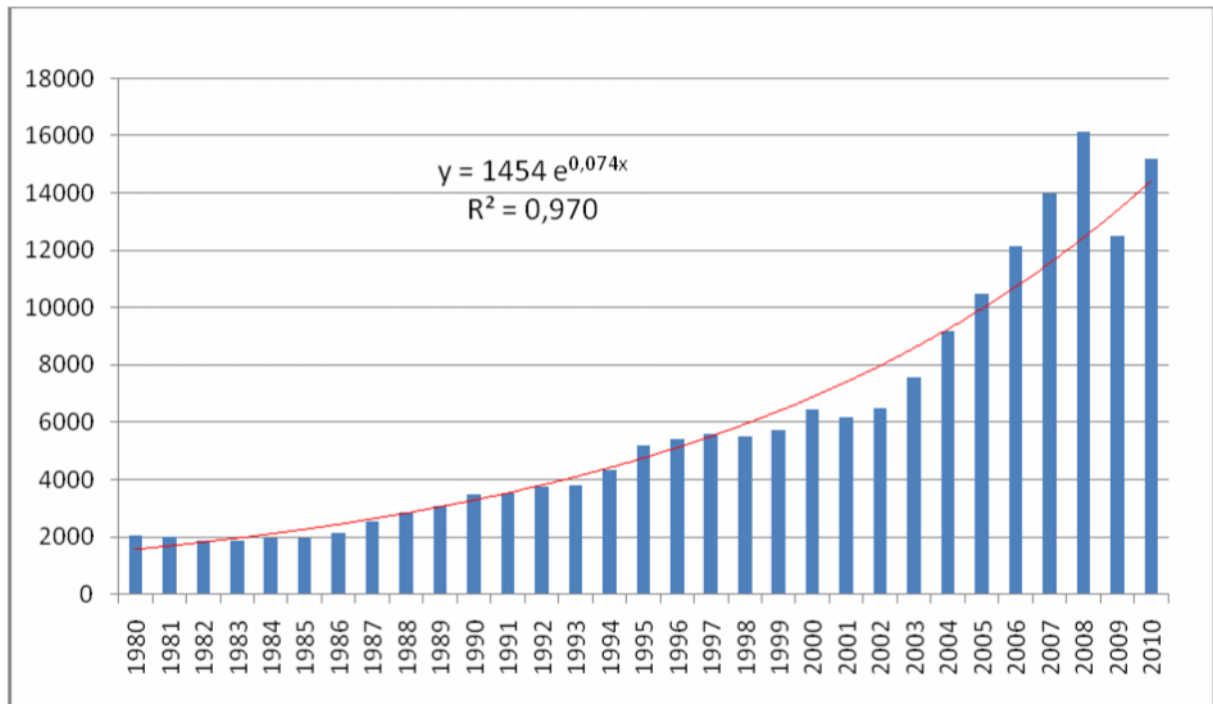
[3]  
( . 2).

0,97,

. 1  
2009 .



1. 1990-2010 . ( , 1990 = 100)



2.

		*		
1970	1 442	448	676	2 566
1980	1 871	796	1 037	3 704
1990	1 755	968	1 285	4 008
2000	2 163	1 288	2 533	5 984
2006	2 698	1 836	3 166	7 700
2007	2 747	1 957	3 330	8 034
2008	2 742	2 059	3 428	8 229
2009	2 642	2 094	3 122	7 858
2010**	2 752	2 333	3 323	8 408

\*

\*\*

. 1

2009

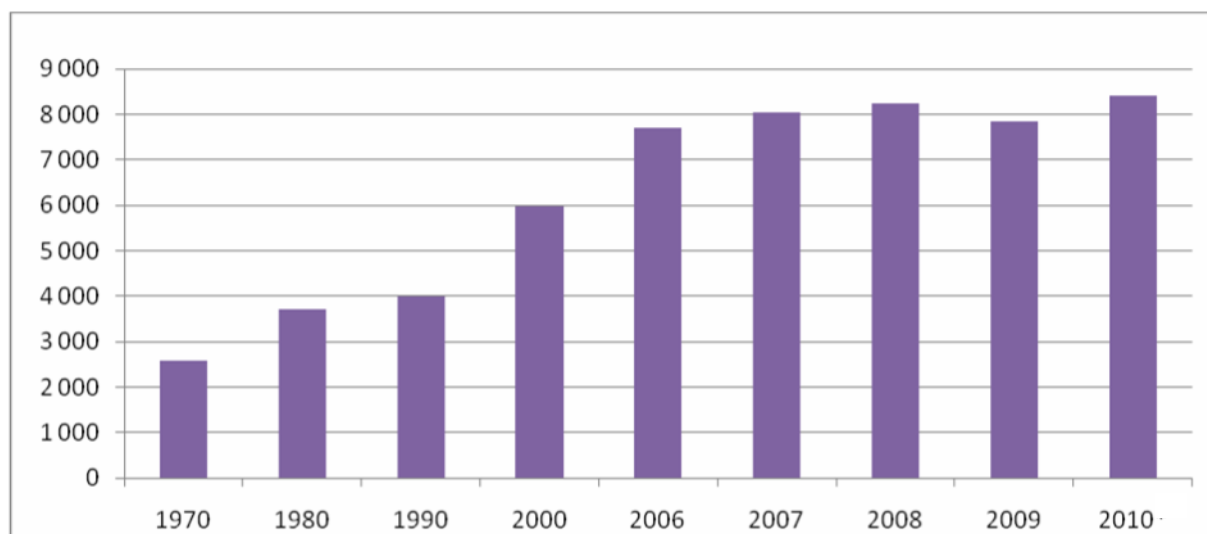
2008

. 2 [1, 81],

. 3

(DW).

2010

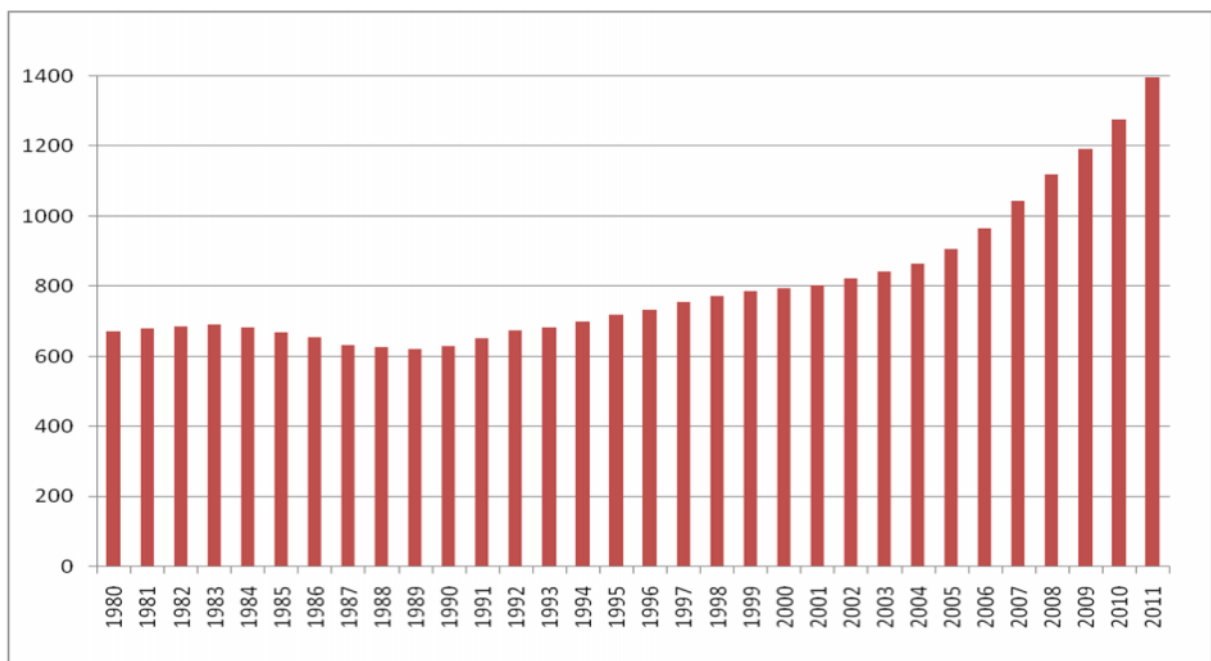


. 3.

2009 2010 ..  
90-

	DW	DW	DW
1970	326	2566	7,9
1980	683	3704	5,4
1990	658	4008	6,1
2000	799	5984	7,5
2006	960	7700	8,0
2007	1042	8034	7,7
2008	1118	8229	7,4
2009	1192	7858	6,6
2010	1395	8408	6,0

2003-  
2011 . 2009 . [4]. 4



. 4.

2003 . 1990 2010 .  
1989 . 20 .  
10%. 1990 . 103%. 1989 .

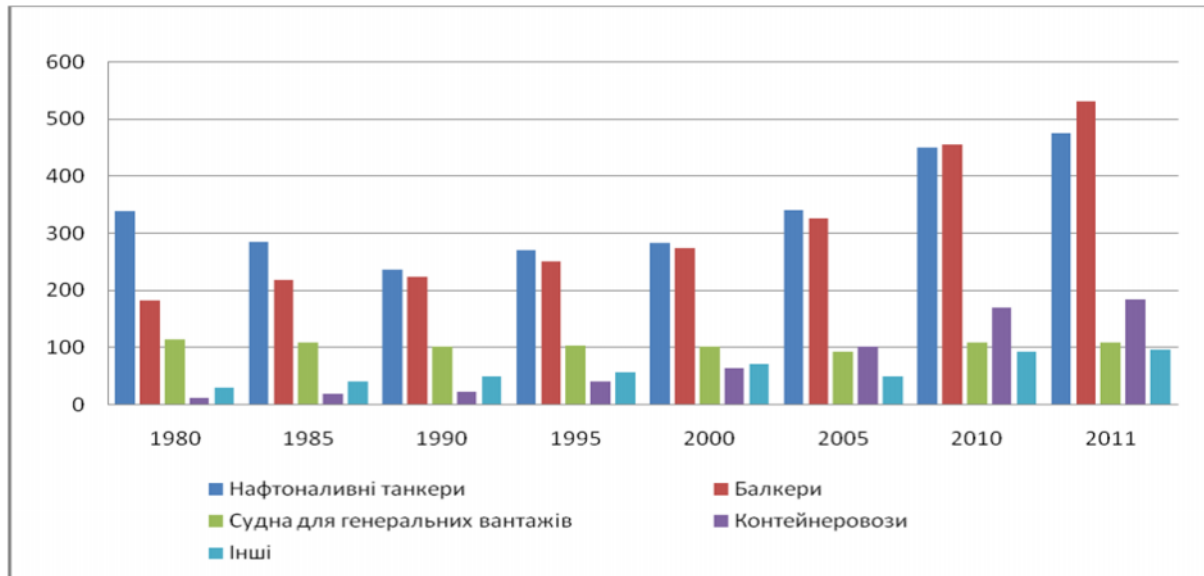
[3],

1990-2010

.5.

1000

,  
800-



.5.

DW

2010

2,7

1990

2010

1. Review of maritime, 2011 Report by the UNCTAD secretariat. United nations conference on trade and development. – United Nations, New York and Geneva, 2011. – 213 p.

2. World trade report 2011. The WTO and preferential trade agreements: From co-existence to coherence [ ]. – : [http://www.wto.org/english/res\\_e/booksp\\_e/anrep\\_e/world\\_trade\\_report11\\_e.pdf](http://www.wto.org/english/res_e/booksp_e/anrep_e/world_trade_report11_e.pdf)

3.

: 20

[ ] / . . . : [http://www.experts.in.ua/baza/analytic/index.php?ELEMENT\\_ID=86561&print=Y](http://www.experts.in.ua/baza/analytic/index.php?ELEMENT_ID=86561&print=Y).

4.

...

...

//

,

...

...

...

...

...

...

...

/

15.

. - 2011. - 2. - 9-

08.08.2011 .