

« — » .

1. (2010 – 2011) [/ [. :] . – .: , 2011. – 167 . – : <http://freedomhouse.org.ua/analytics>.

2. – – – .: [. .], 2008. – 132 c. – (: « »).

3. : [/ . . . – .: , 2008. – 496 .

4. . / // . – 2001. – 4–5. – . 174.

5. . . : [. –] / . . . , 2011. – 652 .

338.46 : 332.14

« . . . » , . . . ,

THE ROLE OF THE SPHERE OF SOCIAL SERVICES IN REALIZATION OF THE MODERN PARADIGM OF THE SUSTAINABLE DEVELOPMENT

The role of the social services in statement processes in a society of a modern paradigm of a sustainable development is analyzed, mechanisms of inclusion of the public to the decision of environmental problems are investigated.

Key words: social service, sustainable development, social inclusion.



’ (’ , ,) -

(Education for Sustainable Development),

; - ,

,

,

,

,

.

.

,

« +20».

,

,

.

,

(

.

,

,

.

,

.

,

.

,

.

.),

-

.

.

[1, 2]

,

.

-

.

.

,

.

,

,

,

,

.

,

«

»,

,

,

,

,

,

.

,

,

[3].

»,
».

[4, . 175–177],

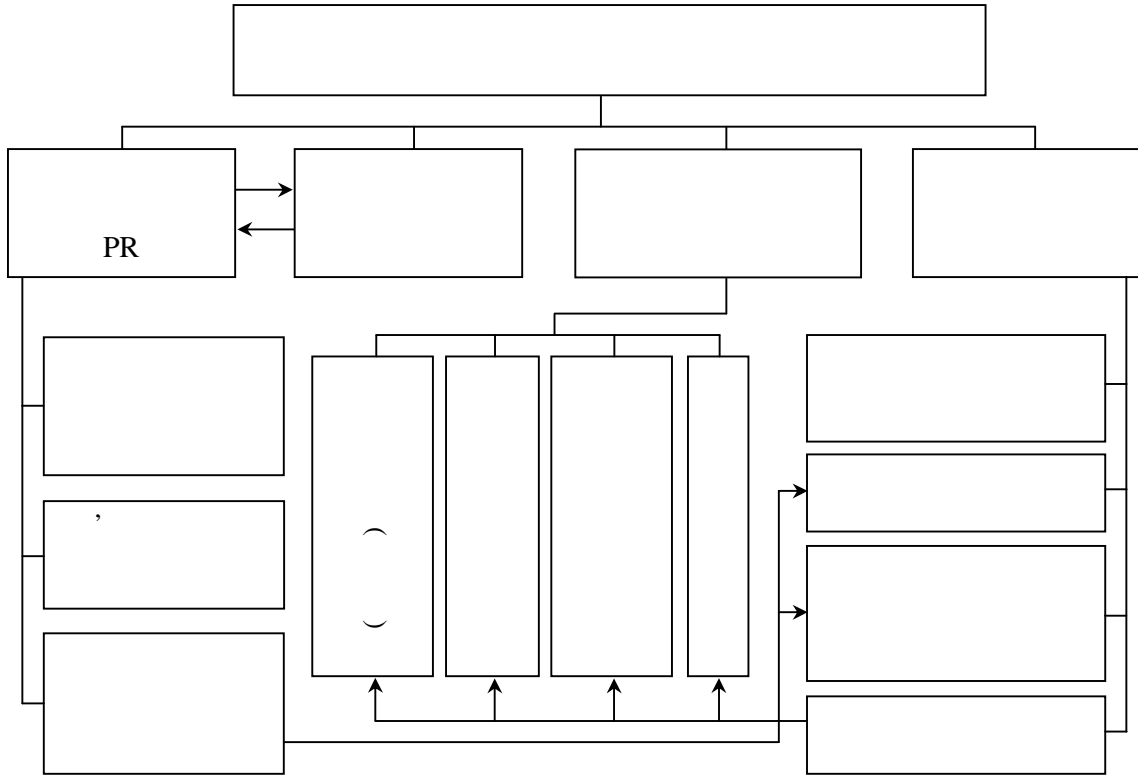
« : »

()

» [1, . 29].

().

[5].





, , , ,
 .
 . :
 , , -
 ; ,
 , ; -
 , , , , ,
 , , , , . ,
 (,)
 , (,) ,
 . :
 • ;
 • ;
 • ;
 • (, ,) ;
 • ; , ,
 • ;
 • (, ,)
 , , -
 , .
 , , , ,
 , , . ,

()

1. 2011. :
 / . - .: UNDP, 2011. - 123 .

2. :
 / I „ „ . .]. - .: ,
 2010. - 84 .

3. . .
 [/ . . //
 . - 2012. - 2. - :
<http://www.economy.nayka.com.ua>.

4. :
 . . . : 08.00.05 / . - ., 2006 - 327 .

5. ,
 () :
 832-XIV 06.07.1999 [/
 : <http://portal.rada.gov.ua>.

330.111 : 330.34.014

« »

**INWARD TERRITORIAL CAPITAL OF NATIONAL ECONOMY
 SUSTAINABLE DEVELOPMENT**