

. . . , . . .

( - . . . ) ,

« . . . » , . . .

### CLINICAL ASSESSMENT OF EFFICIENCY OF TREATMENT OF CHRONIC PURULENT ODONTOGENIC MAXILLARY SINUSITIS IN THE SHORT AND LONG-TERM PERIOD

S.G. Bezrukov, A.N. Balabantseva

#### SUMMARY

Treatment of 112 patients with chronic purulent odontogenic maxillary sinusitis is carried out. All patients have been divided into two clinical groups depending on a technique of local therapy. The comparative analyses a traditional method and complex of treatment with inclusion of Decasan and Tiotriazolol preparations is carried out. The corrections in a local treatment of chronic odontogenic maxillary sinusitis conduct to more expressed and more resistant positive changes of clinical current of disease and promote reduction of terms of treatment of the patients.

. . . , . . .

112

2

:

112 17 62

[1, 2, 3, 4]. 7,6%

3-10% 21,3%

[5, 6, 7]. 2

54

0,02%

4 2,5%

58

( 40-50 ).

( 5 0,01% ) [8].

4 2,5%

:

,

,

,

,

(

,

,

).

1, 3, 5, 8, 12

,

( 1 .1 / ).

6 24

(

,

,

,

,

3

5

(58%),

(96,4%),

(66,1%),

(80,1%)

(83,9%).

-21,4%

:

(204 91

,

-7,1%,

-72,3%.

( ,115 ,

37<sup>0</sup> -54,4%,

);

37,5<sup>0</sup> -40,2%, 37,5<sup>0</sup> -5,4%

( 7 ),

( 12

),

( 6 ).

(87,5%)

12,5%

,

,

58,9%

,

25%, - 75%

,

63,4%

,

28,6%

:

(37<sup>0</sup> )

( 40-50 ).

- 35,7%.

5 0,01%

,

,

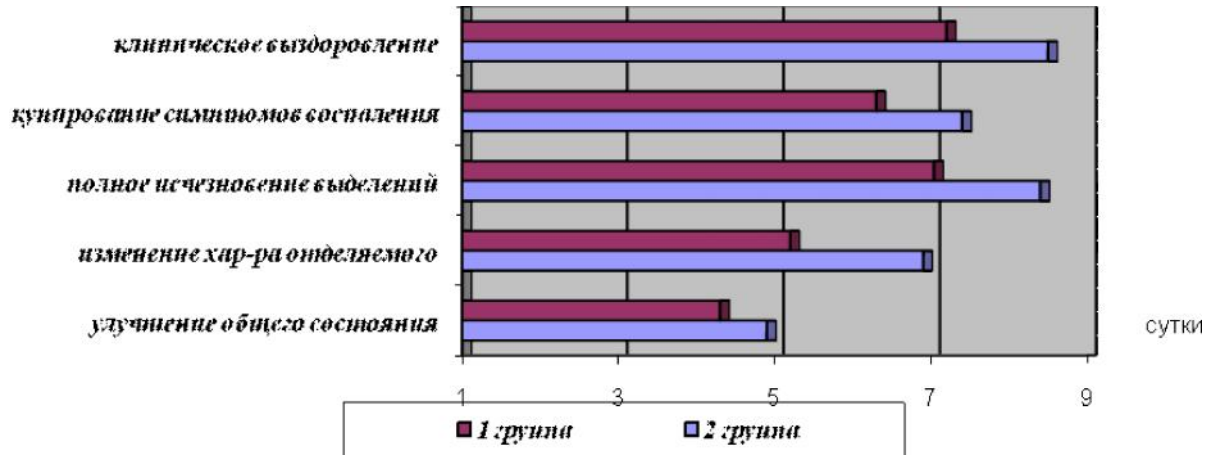
,

37<sup>0</sup> 0,02%

( 61,6% ),  
 7,1% , 25,9% - , 48,3% 3 , 39,7% - 5  
 5,4% - (1 ) -  
 . 9 63% , 31,5%  
 - 3- , ( - 6 - 7 . 5 5,6%  
 ). :  
 ), ( 9,2% 1 55,1% - 2. 61,1% -  
 ( 36,6% ), - 3 5,2% , 5 - 8,6%, 7  
 - 39,7%, 8 - 1,7%. , 12,1%  
 26,9% . , « - , 30,3% - 5 , 7 -  
 -12%, » - 14,9%, - 57,6% . , -  
 2,1%. , , - . 3  
 , , - 12,1% - 5,6% , -  
 , 15,2% . - 7 1 -  
 18,8% . - , 1,7% .  
 (1 -77,8%, 2 -  
 -82,8%), (88,9% 79,3%), ,  
 (92,6% 100%) (87% 46,6%) 3 5,6% , -  
 62,1%), , (83,3% . 5 -  
 ( ) . (44,4%). (24,1%) -  
 (2 ) , :  
 , 5-6 . , . 14,8%  
 4 , 5 5 ,  
 , , 7 (77,8%) ,  
 , . 12,1% -  
 (32,8%) 3 19 - , 65,5% - 5  
 , 5 23 (39,7%) - . 7 5,2%  
 7 . 6-7 . 31% -  
 44,4% ,  
 . 21 (38,9%) , 5-7 -  
 - 7-9. 37 -  
 (82,2%). 5 90,7% 1 . ( -  
 87,5%, 6 - , ) ,

7 ( 1,7%), ( 24,1%) ( 5,2%)  
 ( 3,4%),

.1.



.1.

(n = 112)

(n = 54) (n = 58) -  
 $7,90 \pm 0,12$  , ( ) 3 (16,7%)  
 $8,86 \pm 0,17$  , 0,96 2 20  
 6 2 75%  
 ( 4 (20%) , 3 (15%) -  
 ), 2 (10%) -  
 (5%) 2  
 6 26 ,  
 , 2 83,3%  
 (8,1%) 75% 5%  
 22 6 ,  
 4 (18,2%) ,  
 - 3 (13,6%)  
 24 38  
 - 18  
 20 -  
 83,3% 1. . . .

